



Four hands are visible in the background, each making a different sign language gesture. The top-left hand is in the 'OK' gesture. The top-middle hand is in the 'V' or 'peace' gesture. The top-right hand is in the 'rock on' or 'devil horns' gesture. The bottom-left hand is in a gesture with the index and thumb extended. The bottom-middle hand is in the 'L' or 'number 2' gesture. The bottom-right hand is in a gesture with the index finger extended. The background is a solid orange color with a white grid pattern. There are also some white decorative elements like circles and lines.

# PCC GET PAID BILLING DROP-IN

Sept 23, 2025

International Day of Sign  
Languages

>>>>

>>>>

# PCC Get Paid Vision

Every pediatrician gets maximal payment for every service rendered with minimal administrative effort.

>>>>



# >>>> Drop-In Premise

Ask each other and PCC coding, billing, and / or payor related questions

PCC appreciates your insight into our development of products and services

>>>> \*Please consider changing your Zoom name to include your practice's state to facilitate geographic crowdsourcing



>>>>

# YOUR PCC GET PAID CREW



<b>Ben</b>	SME/Consultant
<b>Brian K</b>	Applications / Coding
<b>Doug B</b>	Implementation Specialist
<b>Douglas</b>	Education
<b>Jack</b>	Application Support
<b>Jan</b>	Operations
<b>Jay</b>	Developer
<b>Jeremy</b>	Implementation Specialist
<b>Justin</b>	Visionary



<b>Kelsey</b>	Business Analyst
<b>Kristen</b>	Project Manager
<b>Mary</b>	Tech Support
<b>Michael</b>	Product Design
<b>Noah</b>	Developer
<b>Owen</b>	Quality Assurance
<b>Phil</b>	Operations Specialist
<b>Tim B</b>	Developer



# >>>> TODAY'S AGENDA



**YOUR QUESTIONS**



**Coding & Billing Updates**



**Billing Roadmap Review**



**Development Show & Tell**

>>>> **YOUR**

**QUESTIONS**

Let's find answers



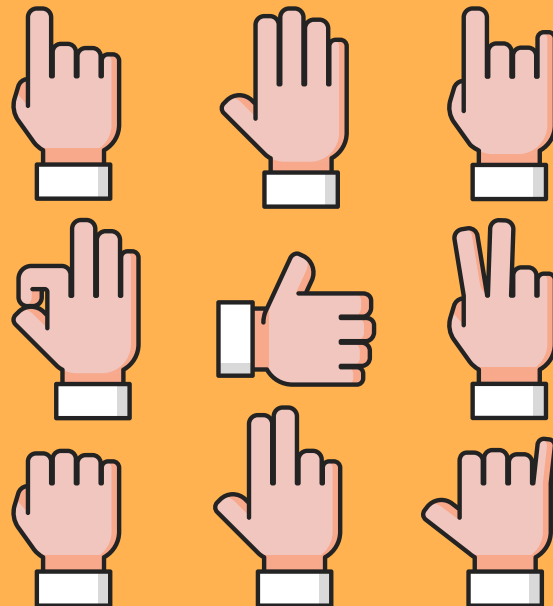
>>>>

# BILLING HEADS UP

Claim files being rejected for expired Proprietary Lab  
Analyses (PLA) codes. Eff 7/1/25 AMA deleted:

**0240U** Xpert® Xpress CoV-2/Flu/RSV plus (SARS-CoV-2 and Flu targets), Cepheid® (RNA, 3 targets ([SARS-CoV-2], influenza A, influenza B))

**0241U** Xpert® Xpress CoV-2/Flu/RSV plus (all targets), Cepheid® (RNA, 4 targets ([SARS-CoV-2], influenza A, influenza B, [RSV]))



# ANOTHER BILLING HEADS UP

Effective 10/1/25 Cigna will implement a new reimbursement policy. Their [Evaluation and Management Coding Accuracy \(R49\)](#) policy states, "Cigna may adjust the E/M CPT® code 99204-99205, 99214-99215, 99244-99245 to a single level lower when the encounter criteria on the claim does not support the higher-level E/M CPT® code reported."

Send full record of the encounter to the secure Cigna

Healthcarefax number 833.392.2092 to request reconsideration.



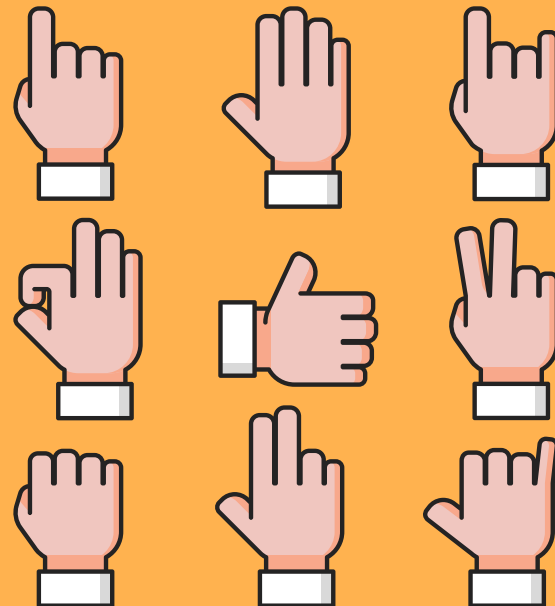


# CODING UPDATES

## 2026 ICD-10 Guidelines Updates - Eff 10/1/25

### Multiple Sites Coding

The classification defines “multiple” as involving two or more sites. Follow chapter-specific guidelines for assigning codes for “multiple sites.” In the absence of chapter-specific guidelines, assign codes describing specified sites individually when documented. When the specified site(s) are not documented, assign the appropriate code for “multiple sites.”



# CODING UPDATES

## 2026 ICD-10 Guidelines Updates - Eff 10/1/25 cont'd

### Type 2 diabetes mellitus in remission

Code E11.A, Type 2 diabetes mellitus without complications in remission, is assigned **based on provider documentation** that the diabetes mellitus is in remission. If the documentation is unclear as to whether the Type 2 diabetes mellitus has achieved remission, the provider should be queried. For example, the term **"resolved" is not synonymous with remission.**



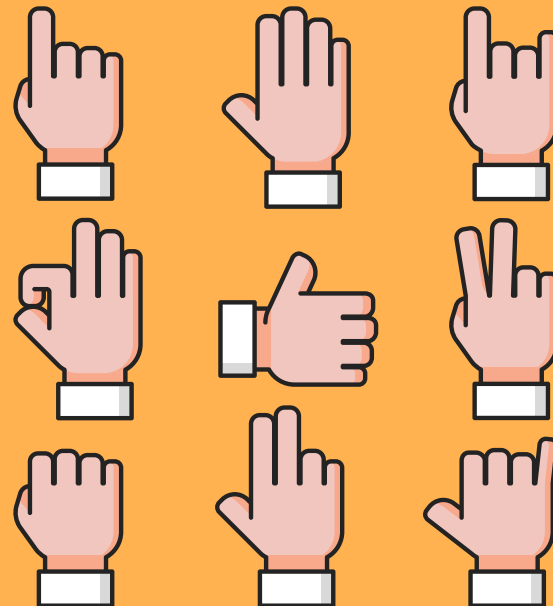
# CODING UPDATES

## 2026 ICD-10 Guidelines Updates - Eff 10/1/25 cont'd

### Z68 Body mass index (BMI)

BMI codes should only be assigned when there is an associated, reportable diagnosis (such as obesity **or anorexia**) **documented by the patient's provider.**

Do not assign BMI codes during pregnancy. **When the documentation reflects fluctuating BMI values during the current encounter for an associated reportable condition, assign a code for the most severe value.**



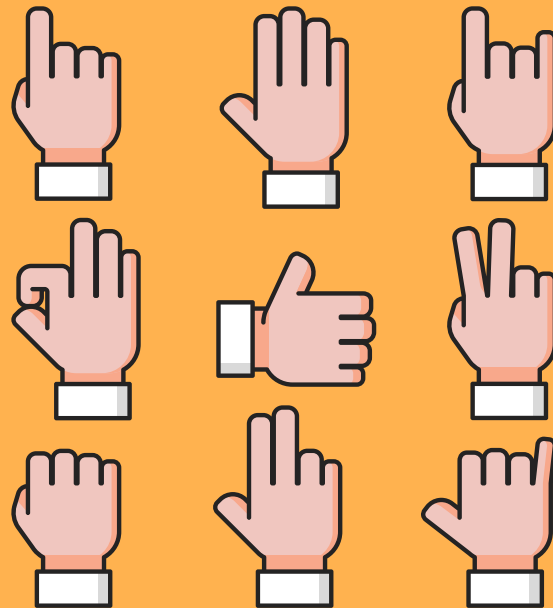
# CODING UPDATES

## AMA: Category I Vaccine Long Code Descriptors

**91323** Severe acute respiratory syndrome coronavirus 2  
(SARS-CoV-2) (coronavirus disease [COVID-19]) vaccine,  
mRNA-LNP, 10 mcg/0.2 mL dosage, for intramuscular use

**90382** Respiratory syncytial virus, monoclonal antibody, seasonal  
dose, 0.7 mL, for intramuscular use

Eff July 1, 2025





# CODING RESOURCE: Monthly AAP Coding Newsletter

## Free for PCC Clients

- Included in your PCC subscription and available right in PCC EHR



## Free AAPC CEUs

.5 CEUs for every online quiz passed



## GREAT Content – Sept 2025

1. Immunization Coding: Flu Vaccs & Admin
2. Coding for Immunization Counseling
3. Refresh Your Knowledge: Reporting National Drug Codes
4. Updates: Codes for Epinephrine and Adrenalin

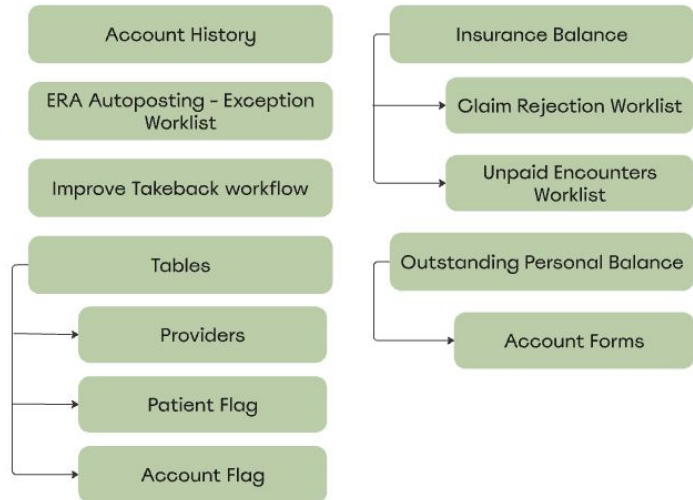


# Get Paid Roadmap

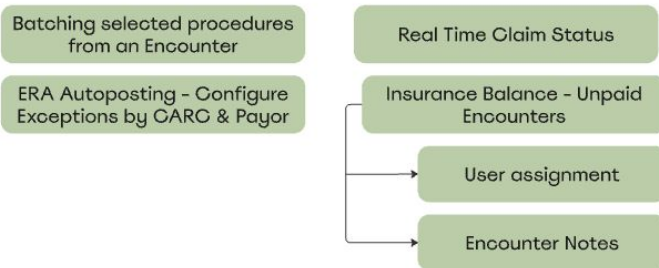
## Get Paid Roadmap

as of 9/23/25

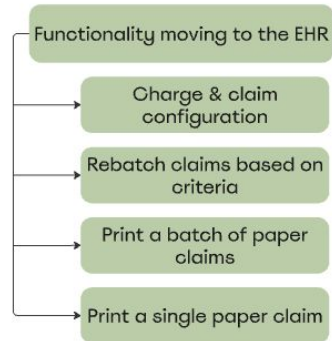
### 10.4 Release [October 2025]



### 10.5 Release [February 2026] WIP



### What's Next?



# JOIN US AGAIN!!

## UPCOMING EVENTS

	M	T	W	TH	F
OCT	20	21	22 Monthly Billing Drop In	23	24
NOV	17	18	19	20 Monthly Billing Drop In	21

### OCTOBER DROP IN

Wed 10/22/25

2p-4p Eastern

**Register: [here](#)**

### NOVEMBER DROP IN

Thurs 11/20/25

2p-4p Eastern

**Register: [here](#)**

>>>>

# THANKS

—

GET PAID **SO** APPRECIATES  
YOUR TIME AND  
ATTENDANCE!

.

>>>>

support@pcc.com

+

CREDITS: This presentation template was created by Slidesgo,  
including icons by Flaticon, and infographics & images by Freepik.

—

Please keep this slide for attribution.

—

