



PCC Get Paid

Billing Drop-In

August 21, 2025

Happy Poet's Day

# PCC Get Paid Vision

Every pediatrician gets maximal payment  
for every service rendered with minimal  
administrative effort



# Drop-In Premise

Ask each other and PCC coding, billing,  
and / or payor related questions

PCC appreciates your insight into our  
development of products and services

\*Please consider changing your Zoom name  
to include your practice's state to facilitate  
geographic crowdsourcing



# Your PCC GET PAID Crew



<b>Ben</b>	SME/Consultant
<b>Brian K</b>	App/Coding
<b>Doug B</b>	Implementation
<b>Douglas</b>	Education
<b>Jack</b>	App Support
<b>Jan</b>	Operations
<b>Jay</b>	Developer
<b>Jeremy</b>	Implementation
<b>Justin</b>	Visionary

<b>Kelsey</b>	Business Analyst
<b>Kristen</b>	Project Manager
<b>Mary</b>	Tech Support
<b>Michael</b>	Product Design
<b>Noah</b>	Developer
<b>Owen</b>	Quality Assur
<b>Phil</b>	Operations Spec
<b>Tim B</b>	Developer



# Today's Agenda

## 01

### Your questions

Let's find answers

## 02

### Coding Updates

ICD and CPT

## 03

### PCC Features Demo

What's new? What's in development?





# Your Questions

Let's find answers!





# 2026 ICD-10 Update

Effective 10/1/2025



# Data Source - CMS

2026 ICD-10-CM files, 2026 Addendum:

<https://www.cms.gov/medicare/coding-billing/icd-10-codes?redirect=/ICD10>

We will discuss selected items from the above file, this presentation is not an exhaustive list, so please refer to the above resource for all changes.

Items with “Add” are new, items with “Delete” have been removed





# Endocrine, nutritional and metabolic diseases (E00-E89)



## **E11.9 Type 2 diabetes mellitus without complications**

Excludes1: type 2 diabetes mellitus, without complications in remission (E11.A)

**Add - E11.A** Type 2 diabetes mellitus without complications in remission

Excludes1: type 2 diabetes mellitus, with complications (E11.0-E11.8)

type 2 diabetes mellitus, without complications not in remission (E11.9)



# Diseases of the eye and adnexa (H00-H59)



## H01.8 Other specified inflammations of eyelid

Code also, if applicable, infestation by Demodex mites (B88.01)

- Add - **H01.81** Other specified inflammation of right upper eyelid
- Add - **H01.82** Other specified inflammation of right lower eyelid
- Add - **H01.83** Other specified inflammation of right eye, unspecified eyelid
- Add - **H01.84** Other specified inflammation of left upper eyelid
- Add - **H01.85** Other specified inflammation of left lower eyelid
- Add - **H01.86** Other specified inflammation of left eye, unspecified eyelid
- Add - **H01.89** Other specified inflammation of unspecified eye, unspecified eyelid
- Add - **H01.8A** Other specified inflammation of right eye, upper and lower eyelids
- Add - **H01.8B** Other specified inflammation of left eye, upper and lower eyelids



# Chapter 17

*Revise from* -  
**Congenital  
malformations,  
deformations and  
chromosomal  
abnormalities  
(Q00-Q99)**

*Revise to* -  
**Congenital  
malformations,  
deformations,  
chromosomal  
abnormalities, and  
genetic disorders  
(Q00-QA0)**



# Congenital malformations, deformations, chromosomal abnormalities, and genetic disorders (Q00-QA0) - Cont.

Please review CHAPTER 17 changes as a whole, there were a large amount of added specificity for congenital diseases



# Symptoms and signs involving the digestive system and abdomen (R10-R19)

## R10.2 Pelvic and perineal pain

**Add** - Excludes2: pain localized to other parts of lower abdomen (R10.3 -)  
pain localized to upper abdomen (R10.1 -)

**Add - R10.20** Pelvic and perineal pain unspecified side

**Add - R10.21** Pelvic and perineal pain right side

**Add - R10.22** Pelvic and perineal pain left side

**Add - R10.23** Pelvic and perineal pain bilateral

**Add - R10.24** Suprapubic pain



# Symptoms and signs involving the digestive system and abdomen - Cont.

## R11 Nausea and vomiting

### R11.1 Vomiting

Add - **R11.16** Cannabis hyperemesis Syndrome

Cannabinoid hyperemesis syndrome

Code also

- cannabis abuse (F12.1-)

- cannabis dependence (F12.2-)

- cannabis use, unspecified (F12.92-, F12.93, F12.95-, F12.98-, F12.99)

- manifestations, such as:

  - dehydration (E86.0)

  - electrolyte imbalance (E87.8)



# Injury, poisoning and certain other consequences of external causes (S00-T88)

Chapter 19 Added specificity “of Flank” for a large number of ICD-10s





# Injury, poisoning and certain other consequences of external causes Cont.



## **T36 Poisoning by, adverse effect of and underdosing of systemic antibiotics**

**Add - T36.A** Poisoning by, adverse effect of and underdosing of fluoroquinolone antibiotics

**Add - T36.AX** Poisoning by, adverse effect of and underdosing of fluoroquinolone antibiotics

**Add - T36.AX1** Poisoning by fluoroquinolone antibiotics, accidental (unintentional)  
Poisoning by fluoroquinolone antibiotics NOS

**Add - T36.AX2** Poisoning by fluoroquinolone antibiotics, intentional self-harm

**Add - T36.AX3** Poisoning by fluoroquinolone antibiotics, assault

**Add - T36.AX4** Poisoning by fluoroquinolone antibiotics, undetermined

**Add - T36.AX5** Adverse effect of fluoroquinolone antibiotics

**Add - T36.AX6** Underdosing of fluoroquinolone antibiotics



# Injury, poisoning and certain other consequences of external causes Cont.



## T78.07 Anaphylactic reaction due to milk and dairy products

**Add - T78.070** Anaphylactic reaction due to milk and dairy products with tolerance to baked milk

Excludes1: Anaphylactic reaction due to milk and dairy products with reactivity to baked milk (T78.071)

**Add - T78.071** Anaphylactic reaction due to milk and dairy products with reactivity to baked milk

Excludes1: Anaphylactic reaction due to milk and dairy products with tolerance to baked milk (T78.070)

**Add - T78.079** Anaphylactic reaction due to milk and dairy products, unspecified



# Injury, poisoning and certain other consequences of external causes Cont.



## **T78.08 Anaphylactic reaction due to eggs**

**Add - T78.080** Anaphylactic reaction due to egg with tolerance to baked egg

Excludes1: Anaphylactic reaction due to egg with reactivity to baked egg (T78.081)

**Add - T78.081** Anaphylactic reaction due to egg with reactivity to baked egg

Excludes1: Anaphylactic reaction due to egg with tolerance to baked egg (T78.080)

**Add - T78.089** Anaphylactic reaction due to eggs, unspecified

## **T78.1 Other adverse food reactions, not elsewhere classified**

**Add - T78.11** Other adverse food reactions due to milk and dairy products

**Add - T78.110** Other adverse food reactions due to milk and dairy products with tolerance to baked milk

Excludes1: Other adverse food reaction due to milk and dairy products with reactivity to baked milk (T78.111)



# Injury, poisoning and certain other consequences of external causes Cont.



Add - **T78.111** Other adverse food reaction due to milk and dairy products with reactivity to baked milk

Excludes1: Other adverse food reaction due to milk and dairy products with tolerance to baked milk (T78.110)

Add - **T78.119** Other adverse food reaction due to milk and dairy products with baked milk tolerance/reactivity, unspecified

Add - **T78.12** Other adverse food reaction due to eggs

Add - **T78.120** Other adverse food reaction due to egg with tolerance to baked egg

Excludes1: Other adverse food reaction due to egg with reactivity to baked egg (T78.121)

Add - **T78.121** Other adverse food reaction due to egg with reactivity to baked egg

Excludes1: Other adverse food reaction due to egg with tolerance to baked egg (T78.120)

Add - **T78.129** Other adverse food reaction due to egg with baked egg tolerance/reactivity, unspecified

Add - **T78.19** Other adverse food reactions, not elsewhere classified





# Factors influencing health status and contact with health services (Z00-Z99)

## Z91.01 Food allergy status

### Z91.011 Allergy to milk products

Add - **Z91.0110** Allergy to milk products, unspecified

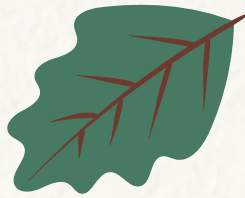
Add - **Z91.0111** Allergy to milk products with tolerance to baked milk

Excludes1: Allergy to milk products with reactivity to baked milk (Z91.0112)

Add - **Z91.0112** Allergy to milk products with reactivity to baked milk

Excludes1: Allergy to milk products with tolerance to baked milk(Z91.0111)





# Factors influencing health status and contact with health services - Cont.

Z91.012 Allergy to eggs

Add - **Z91.0120** Allergy to eggs, unspecified

Add - **Z91.0121** Allergy to eggs with tolerance to baked egg

Excludes1: Allergy to eggs with reactivity to baked egg (Z91.0122)

Add - **Z91.0122** Allergy to eggs with reactivity to baked egg

Excludes1: Allergy to egg with tolerance to baked egg (Z91.0121)







# **CPT 2025 Mid Year Updates and Errata**



# Resources

## **AAP Pediatric Coding Newsletter:**

<https://publications.aap.org/codingnews/article/20/10/3/202215/Current-Procedural-Terminology-Mid-year-Updates-and>

## **CPT Corrections and Errata:**

<https://www.ama-assn.org/system/files/2025-cpt-corrections-errata.pdf>



# CPT 2025: Brand New Product Codes

## July 1 2025

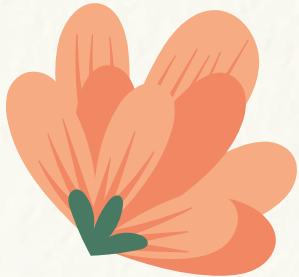
- 90382** - Respiratory syncytial virus, monoclonal antibody, seasonal dose, 0.7 mL, for intramuscular use
- 90635** - Influenza virus vaccine, H5N1, derived from cell cultures, adjuvanted, for intramuscular use
- 90612** - Influenza virus vaccine, trivalent, and severe acute respiratory syndrome coronavirus 2 (SARS-CoV-2) (coronavirus disease [COVID-19]) vaccine, mRNA-LNP, 31.7 mcg/0.32 mL dosage, for intramuscular use
- 90613** - Influenza virus vaccine, quadrivalent, and severe acute respiratory syndrome coronavirus 2 (SARS-CoV-2) (coronavirus disease [COVID-19]) vaccine, mRNA-LNP, 40 mcg/0.4 mL dosage, for intramuscular use
- 91323** - Severe acute respiratory syndrome coronavirus 2 (SARS-CoV-2) (coronavirus

# CPT 2025: Revisions and Errata



**Revise From:** 90620 - Meningococcal recombinant protein and outer membrane vesicle vaccine, serogroup B (MenB-4C), ~~2-dose schedule~~, for intramuscular use

**Revise to:** 90620 - Meningococcal recombinant protein and outer membrane vesicle vaccine, serogroup B (MenB-4C), for intramuscular use



# CPT 2025: Revisions and Errata

Interprofessional telephone/Internet/EHR consultations (99452):

**Revise from:** No in-person encounter within 14 days

**Revise to:** Do not report with same-day E/M



# CPT 2025 Errata: 98000-98016

## Can not be reported:

**Same Day as:** Online digital E/M Service Codes (99421-99423)

Remote physiologic monitoring treatment management services (99457-99458)

**For Service time reported with:** Chronic care management codes (99437, 99439, 99487, 99489, 99490, 99491)

Principal care management (99424-99426)

**In Conjunction with:** Psychiatric diagnostic evaluation with medical services (90792)

## Can be reported:

With E/M codes that may be reported for treatment of psychiatric conditions in lieu of psychiatry service codes:

“Some psychiatry services may be reported with evaluation and management services ([98000-98016] ,...) or other services when performed. Evaluation and management services ( [98000-98016] ,...) may be reported for treatment of psychiatric conditions, rather than using psychiatry services codes, when appropriate”



# The Summer Day - Mary Oliver

Who made the world?  
Who made the swan, and the black bear?  
Who made the grasshopper?  
This grasshopper, I mean –  
the one who has flung herself out of the grass,  
the one who is eating sugar out of my hand,  
who is moving her jaws back and forth instead of up and down –  
who is gazing around with her enormous and complicated eyes.  
Now she lifts her pale forearms and thoroughly washes her face.  
Now she snaps her wings open, and floats away.  
I don't know exactly what a prayer is.  
I do know how to pay attention, how to fall down  
into the grass, how to kneel down in the grass,  
how to be idle and blessed, how to stroll through the fields,  
which is what I have been doing all day.  
Tell me, what else should I have done?  
Doesn't everything die at last, and too soon?  
Tell me, what is it you plan to do  
with your one wild and precious life?





# A Candlelion Poem

Turn a candle inside out  
and you've got the smallest  
portion of a lion standing  
there at the edge of the  
shadows.

—Richard Braughtigan





# JOIN US AGAIN!!

	M	T	W	TH	F
SEPT	22	23 Monthly Billing Drop In	24	25	26
OCT	20	21	22 Monthly Billing Drop In	23	24

## UPCOMING EVENTS

### SEPTEMBER DROP IN

Tues 9/23/25

2p-4p Eastern

**Register: [here](#)**

### OCTOBER DROP IN

Wed 10/22/25

2p-4p Eastern

**Register: [here](#)**



# Thanks!

PCC GET PAID SO APPRECIATES  
YOUR TIME!

[support@pcc.com](mailto:support@pcc.com)

CREDITS: This presentation template was  
created by **Slidesgo** , including icons by  
**Flaticon** , infographics & images by **Freepik**