

PCC Releases Since UC 2012

Release Date	PCC Release Version
August 2012	6.9
September 2012	6.10
November 2012	6.11
January 2013	6.12
February 2013	6.13
April 2013	6.14
June 2013	6.15
July 2013	6.16

What's Coming Next?

Interested in learning more about how to use what's new and what's coming next? Check out the following courses:

What's New in Partner and PCC EHR

Wednesday 8:30-10:30 a.m., Amphitheater

Exciting New Tools in PCC EHR

Wednesday, 1:00-4:30 p.m., Emerald I

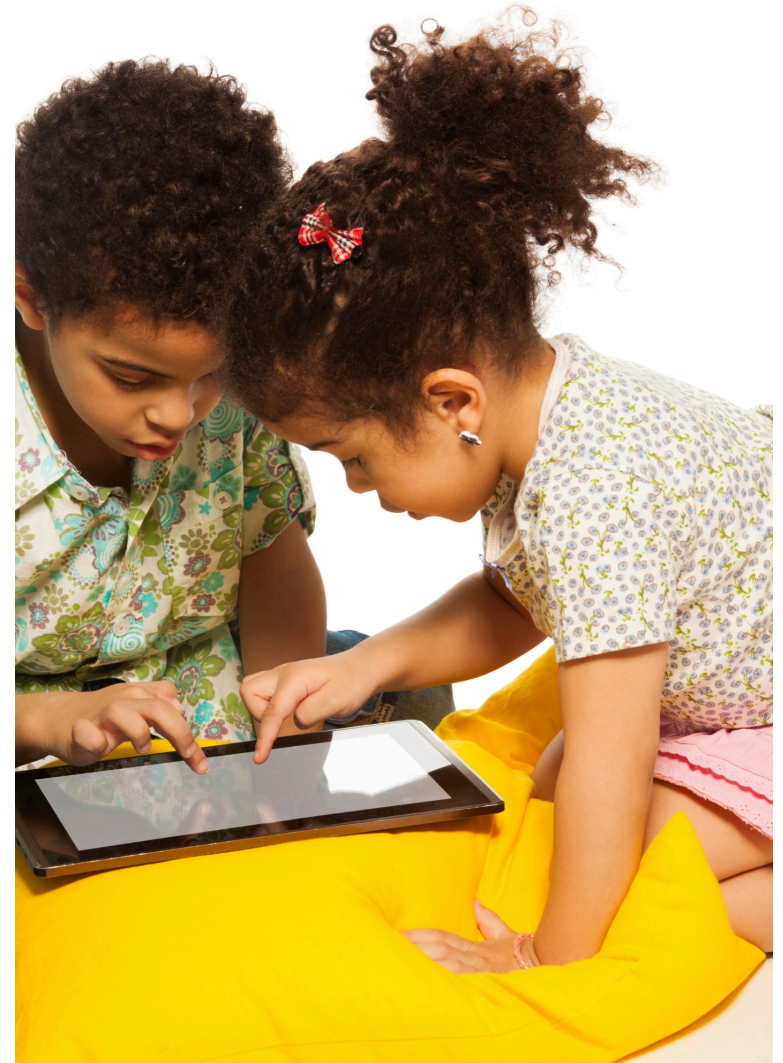
PCC Roadmap Presentation and Product Roundtable

Thursday, 8:30-11:45 a.m., Emerald I



Pediatric Software Just Got Smarter. Your Practice Just Got Healthier.

Find Out What's New at PCC



Pediatric Software Just Got Smarter. Your Practice Just Got Healthier.

Top New PCC Features

Patient Portal

PCC's new Patient Portal is the gateway to medical information for your patients and families. They can find health information summaries, visit summaries, and Patient Vaccine Records. PCC's Patient Portal is optimized for mobile access - perfect for parents on the go.

Electronic Lab Results

E-lab results integration is built around your practice's workflow, allowing you to easily link lab results to orders and generate phone tasks for patient followup. You can hide sensitive lab orders and results from patient reports and the patient portal.

Growth Charts

This year, PCC added AAP-recommended growth charts from the World Health Organization (WHO) to PCC EHR, as well as growth chart support for patients over 20 years of age.

Patient Notification Center

The Patient Notification Center has been expanded to include account balance reminders and patient reminders based on diagnoses, last appointment, and other criteria. Patients and parents can automatically cancel their appointments over the phone and you can look in Partner to find out whether the call, text or email you sent was received.

Electronic Remittance Advice and Autoposting

Partner now tracks multiple Claim Adjustment Reason Code (CARC) values for each procedure reported by your insurance companies via Electronic Remittance Advice (ERA). You can now send secondary claims electronically and autopost more of your ERAs. You'll find CARC codes in Partner reports from Account History (tater) to Correct Mistakes (oops).



Pediatric Software Just Got Smarter. Your Practice Just Got Healthier.

PCC Dashboard

The PCC Dashboard gives you a snapshot of key measures for your practice from the exam room to the billing office. The new Dashboard Homepage makes this even easier, showing you areas for improvement as soon as you log in.

EDI Direct Connections

PCC's EDI Team builds new direct connections to payers across the country, allowing claims to be processed in the most efficient, cost-effective, and well-supported way possible. EDI is also expanding PCC's existing direct connections to immunization registries, streamlining your data submissions to even more state and local registries.

Share Your Feedback

PCC's mission is to bring you the technology and support you need to provide exceptional care for your patients, and this means staying ahead of new patient technology, industry changes, coding requirements and the latest innovations in practice management.

We've included several development milestones and noted some of the best new features PCC has released since last year's Users' Conference in Florida. Your feedback was invaluable in shaping each of these features into sophisticated and user-friendly PCC technology. And we want your input to continue, so we hope you'll stop by our **Wishing Well** to tell us how you like what we've done so far and what you'd like to see PCC tackle next. Find us in the Open Lab in the Exhibit Hall on **Thursday from 12:30 to 2:30 p.m.** and on **Friday from 12:30 to 3:00 p.m.**



Pediatric Software Just Got Smarter. Your Practice Just Got Healthier.